

NEW ROOTS

NATURAL HEALTH PRODUCTS
WWW.NEWROOTSHERBAL.EU

HERBAL

» DESPARASITATION PROGRAMME



- Exclusive information for health-care professionals -



PARASITES

Parasites take hold of essential nutrients, weaken the immune system, harm tissues and organs and intoxicate the body with toxic waste from metabolism. When these toxins (or the parasites themselves) damage the intestinal mucosa and pass through the walls of the small intestine, they settle preferably in the weakest points of the body (kidneys, heart, spleen, brain, joints, etc.), where initial discomfort can

become a chronic health problem.

Important indication. To avoid overloading the body with toxins released by parasites, we recommend carrying out the **Cleansing and Detoxification phase** BEFORE the **Parasite Elimination phase**.

Timing considerations. The full moon is associated with higher parasite activity. Parasites appear more active and reproductive in-line with our body's

circadian rhythm. During a full moon, our bodies naturally produce more serotonin and less melatonin and as parasites have receptors for serotonin, this increases their movement and activity. In order to attack the parasites when they are most active you could consider finishing the cleansing period 5 days prior to the full moon and then immediately starting Phase 2 Parasite Elimination when the parasites are likely to be most active.

PHASE 1. Duration: 3 weeks

CLEANSING AND DETOXIFICATION

Choose from **ONE** of the two cleansing formulas:

UltraPurifiant Cleanse

This formula promotes and facilitates detoxification, stimulating the elimination organs and helping detoxify the kidneys, blood and lymph.



WEB INFORMATION



WEB INFORMATION

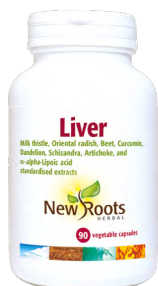
PsylliumPlus

Parasites almost always nest in the intestinal walls. PsylliumPlus made with enriched fiber decisively supports toxin elimination through the intestines and provides rapid expulsion of toxic waste that has detached from the intestinal walls.

Use in combination with:

Liver

To neutralize toxins from parasites in the liver. It favours liver detoxification and generally reinforces its function.



WEB INFORMATION



WEB INFORMATION

ProBoulardii Plus

It cleans, protects and regenerates intestinal flora. Given the fact that during intestinal cleansing, good bacteria are also naturally eliminated, their regeneration is an important step. Probiotics and prebiotics with enteric coating. 21 billion beneficial bacteria per capsule, 11 different strains. Includes 10 billion of *S. boulardii* which is very effective to fight pathogens.

PHASE 2. Duration: 2 weeks

PARASITE ELIMINATION

Parasit

This formula contains 10 ingredients that are well known for their parasite fighting properties. Some of the ingredients attack parasites, others strengthen the immune system and protect the body from infection, and others help the body expel dead parasites and promote detoxification.



WEB INFORMATION



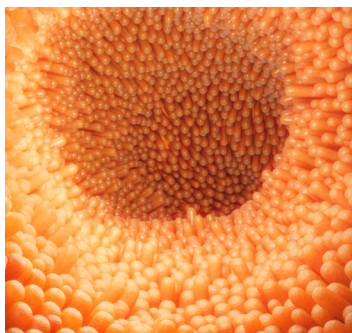
WEB INFORMATION

ProBoulardii Plus

Probiotics and prebiotics that clean, protect, feed and regenerate intestinal flora during the parasite cleansing process. Includes 10 billion of *S. boulardii* which is very effective to fight pathogens.

PHASE 3. Duration: 2 months

IMMUNE STRENGTHENING AND REGENERATION OF THE INTESTINAL FLORA



VitaminC Plus (time release): a good antioxidant that helps strengthen the immune system. Taking vitamin C is also recommended as the parasitic worm *ascaris* oxidises this.

MultiNutriMax combines vitamins and minerals with a variety of standardized nutraceuticals. More than a multivitamin, it provides an ample spectrum of vitamins, minerals and nutrients for greater antioxidant protection and immune support.

ProBoulardii Plus Probiotics and prebiotics that clean, protect, feed and regenerate intestinal flora during the parasite cleansing process. Includes 10 billion of *S. boulardii* which is very effective to fight pathogens.

PROTOCOL

PROTOCOL BENEFITS

To cleanse the body of toxins, heavy metals, chemical agents and other agents that are harmful for health. Detoxification favours healthy intestinal mucosa, which in turn favours waste elimination, as well as proper nutrient absorption. It also keeps toxins from passing through the intestinal walls and settling in the body's weak points (kidneys, heart, spleen, brain, joints, etc) where diseases can develop (at times chronic).

- » To eliminate parasites, their eggs and larva.
- » To regenerate, balance and strengthen the intestinal flora.
- » To reinforce the immune system.

CLEANSING AND DETOXIFICATION

3 weeks

Choose from **ONE** of the two cleansing formulas:

UltraPurifiant Cleanse

Take 3-5 capsules twice daily before meals. It is extremely important to drink plenty water after taking this formula to ensure optimal hydration through out the day.

PsylliumPlus

Mix 2 level teaspoons of PsylliumPlus with water, and consume approximately 20 minutes before breakfast. Then drink 1 large glass of water immediately after taking the formula. Ensure you optimally hydrate through-out the day.

Use in combination with:

Liver

1 capsule with breakfast and dinner

ProBoulardii Plus

1 capsule with breakfast and dinner

PARASITE ELIMINATION

2 weeks

Parasit - 2 capsules 3 times daily before meals

ProBoulardii Plus - 1 capsule, twice daily

IMMUNE STRENGTHENING

2 months

ProBoulardii Plus - 1-2 capsules daily

MultiNutriMax - 2 capsules daily

VitaminC Plus - 1 tablet daily



ATTENTION

REPEATING THE PROTOCOL

The Parasite Program should be adjusted to the corresponding life cycle of the parasites. Since the eggs of most parasites open every two to three weeks, we recommend repeating the parasite elimination phase for 15 days (after taking a 5 day break).

When the eggs open it can take varying lengths of time before they change their form and migrate to the intestine. Therefore repeating the whole protocol after 90 days have passed may be beneficial.



WEB INFORMATION

WEB INFORMATION

WEB INFORMATION

WEB INFORMATION

SUPPORTIVE PRODUCTS

WildOregano. Biofilm disruptor (3-5 times daily 5 drops in water, sipping inbetween meals). It has positive effects for gastrointestinal problems. It stimulates bile and enzyme secretion, supporting and improving digestive function, and along with its antiseptic, antifungal and anti-parasitic properties, impedes the proliferation of pathogenic organisms in the gastrointestinal tract.

MetalDetox Protector. Contains *N*-acetyl-L-cysteine, vitamin C and DL-*alpha*-lipoic acid. It helps eliminate heavy metals. The combination of parasites and heavy metals is known to cause cell changes that lead to diverse pathologies.

ZenPlus. It's a nerve and adaptogenic blend, with a B-complex to increase the body's resistance to multiple forms of stress. It helps reduce nervousness, irritability and anxiety while supporting emotional and mental well-being.

PeaceGreens. A vital energy and immune formula which can be taken before you start the cleanse or during the immune regeneration phase. It contains all the necessary ingredients to support and strengthen digestion, detoxification, immunity, and cognition, whilst also protecting the nervous and cardiovascular systems.

FORMULAS



210 vegetable caps.

WEB INFORMATION

Nutritional information:	6 capsules
Psyllium husk (<i>Plantago ovata</i>)	1 827 mg
Butternut bark (<i>Juglans cinera</i>)	197 mg
Corn silk extract (4:1) (<i>Zea mays</i>)	175 mg
Grapefruit seed extract (<i>Citrus paradisi</i>)	168 mg
Plantain leaf (<i>Plantago major</i>)	139 mg
Red clover flower (<i>Trifolium pratense</i>)	139 mg
Blessed thistle herb top (<i>Cnicus benedictus</i>)	110 mg
Clove flower buds (<i>Syzygium aromaticum</i>)	110 mg
Yellow dock root (<i>Rumex crispus</i>)	110 mg
Black walnut hull extract (4:1) (<i>Juglans nigra</i>)	37 mg
Echinacea root (<i>Echinacea angustifolia</i>)	37 mg
Caprylic acid (calcium and magnesium caprylate)	37 mg
Bentonite	30 mg
Garlic bulb odourless (<i>Allium sativum</i>)	18 mg



200 g

WEB INFORMATION

Nutritional information:	2 teaspoons
Psyllium (<i>Plantago ovata</i>) husks	3 890 mg
Hibiscus (<i>Hibiscus sabdariffa</i>) flower	829 mg
Licorice (<i>Glycyrrhiza glabra</i>) root	104 mg
Stevia (<i>Stevia rebaudiana</i>) leaf	95 mg
Inulin (from chicory root <i>Cichorium intybus</i>)	71 mg
Clove (<i>Syzygium aromaticum</i>) flower bud	11 mg



90 vegetable caps.

WEB INFORMATION

Nutritional information:	3 capsules
Milk thistle ^o (<i>Silybum marianum</i>) (80% silymarin)	750 mg
Oriental radish (<i>Raphanus sativus</i> var. <i>niger</i>) root	360 mg
Beet (<i>Beta vulgaris</i>) root	360 mg
DL- <i>alpha</i> -lipoic acid	150 mg
Curcumin ^o (<i>Curcuma longa</i>) (95% curcuminoids*)	150 mg
Dandelion ^o (<i>Taraxacum officinale</i>) root (3% flavonoids)	150 mg
Schizandra ^o (<i>Schisandra chinensis</i>) (9% schisandrins)	150 mg
Artichoke ^o (<i>Cynara scolymus</i>) leaf (5% cynarin)	105 mg

^ostandardised extract / * providing curcumin I, demethoxycurcumin, and bisdemethoxycurcumin



30 vegetable caps.

WEB INFORMATION

Nutritional information:	1 enteric caps.
<i>Saccharomyces boulardii</i> ***	10,000 billion CFU
<i>Lactobacillus rhamnosus</i> R0011*	4,500 billion CFU
<i>Lactobacillus rhamnosus</i> R1039*	3,375 billion CFU
<i>Lactobacillus acidophilus</i> R0418**	619 million CFU
<i>Lactobacillus helveticus</i> R0052*	563 million CFU
<i>Lactobacillus casei</i> R0215*	450 million CFU
<i>Lactobacillus plantarum</i> R1012***	450 million CFU
<i>Bifidobacterium breve</i> R0070**	338 million CFU
<i>Bifidobacterium infantis</i> R0033**	338 million CFU
<i>Bifidobacterium longum</i> R0175**	338 million CFU
<i>Streptococcus salivarius</i> ssp. <i>thermophilus</i> R0083*	225 million CFU
<i>Lactobacillus delbrueckii</i> ssp. <i>bulgaricus</i> R9001*	56 million CFU
Inulin	8,3 mg
Arabinogalactan	8,3 mg

Source of strains: *dairy / **human / ***plant



90 vegetable caps.

WEB INFORMATION

Nutritional information:	6 capsules
Black walnut (<i>Juglans nigra</i>) hulls	750 mg
Wormwood (<i>Artemisia absinthium</i>)	570 mg
Garlic odourless (<i>Allium sativum</i>)	378 mg
Grapefruit (<i>Citrus paradisi</i>) seed extract	222 mg
Clove (<i>Syzygium aromaticum</i>)	192 mg
Black walnut (<i>Juglans nigra</i>) leaves	186 mg
Pumpkin seed (<i>Cucurbita moschata</i>) extract (4:1)	72 mg
Quassia (<i>Quassia amara</i>) stem wood	54 mg
Oregon-grape (<i>Mahonia aquifolium</i>) root	54 mg
Sage (<i>Salvia officinalis</i>) leaf	54 mg
Ginger (<i>Zingiber officinale</i>) rhizome	48 mg

ISO 17025



info@newrootsherbal.eu



www.newrootsherbal.eu